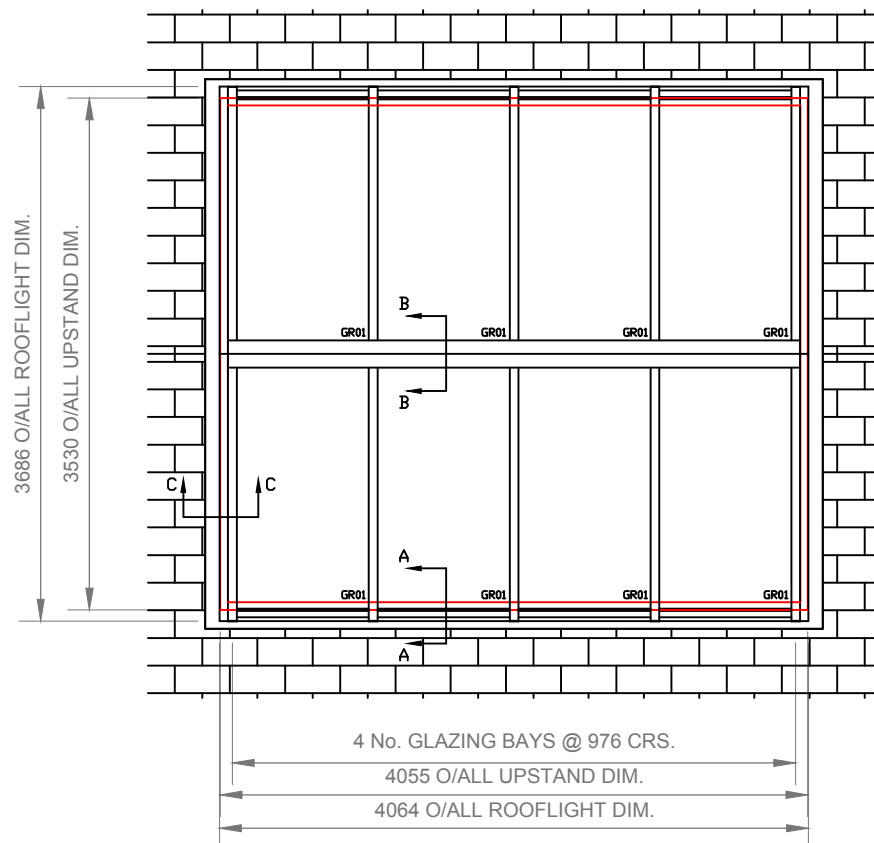


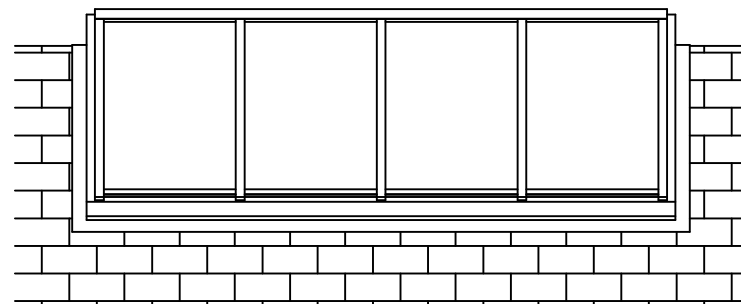
CAMBS GLASS LTD TEL - +44 (0)1638 640 038
UNIT 3 SWAN LANE FAX - +44 (0)1638 667 600
EXNING
NEWMARKET E-MAIL - info@cambsglass.co.uk
CB8 7EN WEBSITE - www.cambsglass.co.uk

All Cambs glass drawings and designs are copyright and thus the sole property of Cambs Glass Ltd. All design information it contains are private and confidential, strictly forbidding it being copied, exhibited or communicated (without written consent) to third parties for any purpose other than that for which it has been issued.
It is Cambs Glass policy to continually develop and improve our designs and products, therefore reserve the right to modify or change the detail design at our discretion and without notice.

PLAN VIEW



FRONT ELEVATION



SECTION B-B

SECTION A-A

10g INNER PRESSING TO SUPPORT INTERNAL FINISHES BY OTHERS

LEADWORK SUPPORT ANGLE TO BE FIXED PRIOR TO LEADWORK INSTALLATION

ANGLE TO BE FIXED @ APPROX 300 CRS

22x22 HARWOOD PACKING TO BE APPLIED TO ALL PERIMETER FLASHING

10g ALI LEADWORK SUPPORT ANGLE TO BE FIXED TO UPSTAND USING M6 x 2" COACH SCREWS

SECTION C-C

INTERNAL FINISHES (BY OTHERS) TO BE INSTALLED TO THE UNDERSIDE OF THE GLAZING RAFTER.

14g PRESSED ALI RIDGE CAPPING TO BE SECURELY FIXED USING No.10 x 1/2" SELF TAPPING SCREWS

5mm NOMINAL SILICONE JOINT BETWEEN RIDGE TRANSOM SECTIONS

1/4" INTERNAL ALI TO BE SECURELY FIXED TO BAR USING No 8 x 1/2" SELF TAPPING SCREW

4"x2"x1/4" ALI ANGLE TO BE FIXED TO THE TIMBER PURLIN USING 2No M6 X 2" COACHSCREW. BRACKETSTO BE FIXED TO BAR USING M6 ST/STL BOLTS AND NYLOC NUTS.

SPECIFICATION

GLASS SPECIFICATION

6mm CLEAR TOUGHENED LOW E
16mm BLACK SILICONE SEALED SPACER
6mm CLEAR TOUGHENED OUTER

ALL GLASS CONFORMING TO IMPACT RESISTANCE AND BREAKAGE CHARACTERISTICS OF BS6206, WITH ALL GLASS UNITS FABRICATED TO BS5713A AND IN ACCORDANCE WITH BS6262

FINISH SPECIFICATION

POLYESTER POWER COATED TO ANY STANDARD RAL REFERENCE
POLYESTER POWER COATING, MINIMUM THICKNESS OF 40 MICRONS.

FRAMEWORK SPECIFICATION

ALL ALUMINIUM EXTRUSIONS TO COMPLY WITH BS1474 AND ALUMINIUM SHEET/PLATE TO BS EN 485, 515 & 573. TYPICALLY PROVIDED IN GRADES 6063 & 6062 (EXTRUSIONS) AND 5184 & NS4 (SHEET/PLATE). ALL MILD STEEL COMPONENTS TO BE GALVANISED, ZINC COATED OR RED OXIDE PRIMED PRIOR TO FINISH APPLICATION. ALL STAINLESS STEEL COMPONENTS PROVIDED IN GRADE 304 STAINLESS STEEL UNLESS OTHERWISE NOTED. EXTREME ENVIRONMENTS (INC. MARINE) MUST BE HIGHLIGHTED AT SALES OR DESIGN STAGE.

HARDWARE SPECIFICATION

ALL HARDWARE TO BE SCHEDULED FOR PURPOSE, TAKING INTO CONSIDERATION BOTH ENVIRONMENT AND BIMETALLIC REACTIONS. FASTENERS TYPICALLY SUPPLIED IN GRADE A2 & A4 STAINLESS STEEL. ALL GASKETS AND TAPES TO HAVE A COMPOSITION SUITABLE FOR CLIMATIC CONDITIONS AND UV LIGHT IN ACCORDANCE WITH BS4265. SILICONES TO BE SUPPLIED AS LOW MODULUS, NEUTRAL CURE (TYPE A) IN ACCORDANCE WITH BS5889 UNLESS OTHERWISE NOTED.

UPSTAND/APERTURE SPECIFICATION

ALL UPSTANDS/APERTURES TO BE PROVIDED WITHIN A TOLERANCE OF +/- 10mm TO THE DIMENSIONS STATED (TAKING INTO CONSIDERATION THE SQUARENESS OF THE STRUCTURE). ANY DIFFERING TOLERANCE REQUIREMENTS AS INDICATED. ALL UPSTANDS/APERTURES TO BE SUITABLE FOR SEALING WHERE INDICATED AND STRUCTURALLY ADEQUATE FOR THE LOADS IMPOSED.

CLIENT

CONTRACT SALES DETAIL

JOB REF SD



ISSUE A NEW DRAWING ISSUE

NAME AME
DATE 30/04/15

ISSUE B

NAME
DATE

ISSUE C

NAME
DATE

ISSUE D

NAME
DATE

PLAN, ELEVATIONS AND SECTIONS FOR 1 NO DUAL PITCHED ROOFLIGHT

DRG No. SD-DPPG-001

ISS. A

PLEASE NOTE - LEADWORK TO BE PULLED BACK OFF TIMBER UPSTAND PRIOR TO OUR MOBILISATION TO SITE, LEADWORKER TO ALSO BE PRESENT DURING INSTALLTION TO REAPPLY THE LEADWORK AGAINST THE ANGLE SHOWN. ALL GLAZING TO BE FITTED DURING A SINGLE MOBILISATION TO SITE